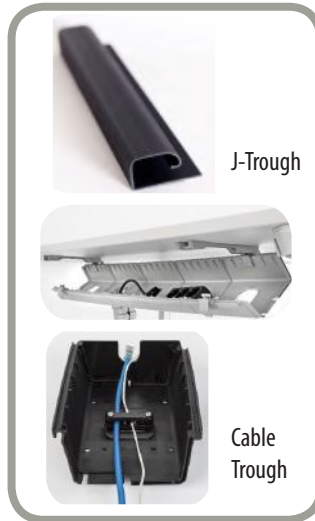


8700 Series - Steel Base Desk Models 519 & 521



Depths	20", 24", 30"
Widths	36", 48", 60", 72"
Standard Height	30"



Specifications

Frame	Fully unitized frame, wire welded, 16 gauge tubular steel construction with 1" x 2" legs connected by 2" x 2" cross-member. Frame finished with electrostatically applied powdercoat 2-3 mils in thickness. Scratch resistance of finish to meet pencil hardness test of 2H or better. Heavy duty floor levelers are standard. <i>Ships assembled.</i> Standard Finishes: (B) Black (P) Platinum (N) Natural Beige
Work Surface	Manufactured using 1" thick, 45lb. industrial grade particleboard core. Exterior surface is high pressure laminate and is applied to core with water resistant adhesive containing no VOC's. A backer sheet is applied to provide balanced construction.
Wire Management Options	(CT) Cable trough is an injection molded duct made from high-impact glass-filled nylon and designed to snap together to create any length channel, spaced in 8" increments. The standard Fold Fastening System allows the trough to tilt in either direction while fastened to the stabilizing brackets on the underneath of the work surface. Standard Finishes: (S) Silver (B) Black (J) J-trough is thick plastic with a living hinge to keep wires in place and or/or easily removed. Attaches to modesty panel, underneath the work surface. Standard Finishes: (B) Black only
Top Colors	CFC Educational: Woodgrains - Solids - Nebulas - Other Standard Finish HPL (upcharge may apply)
Edge Options	(3) 3mm PVC
Edgebanding	Machine applied using PUR adhesive (moisture-curing, polyurethane, containing no VOC's).
Options	(K) Keyboard Tray (G) Flexi Grommets (C) Casters (CT) Cable Trough (J) J-Trough